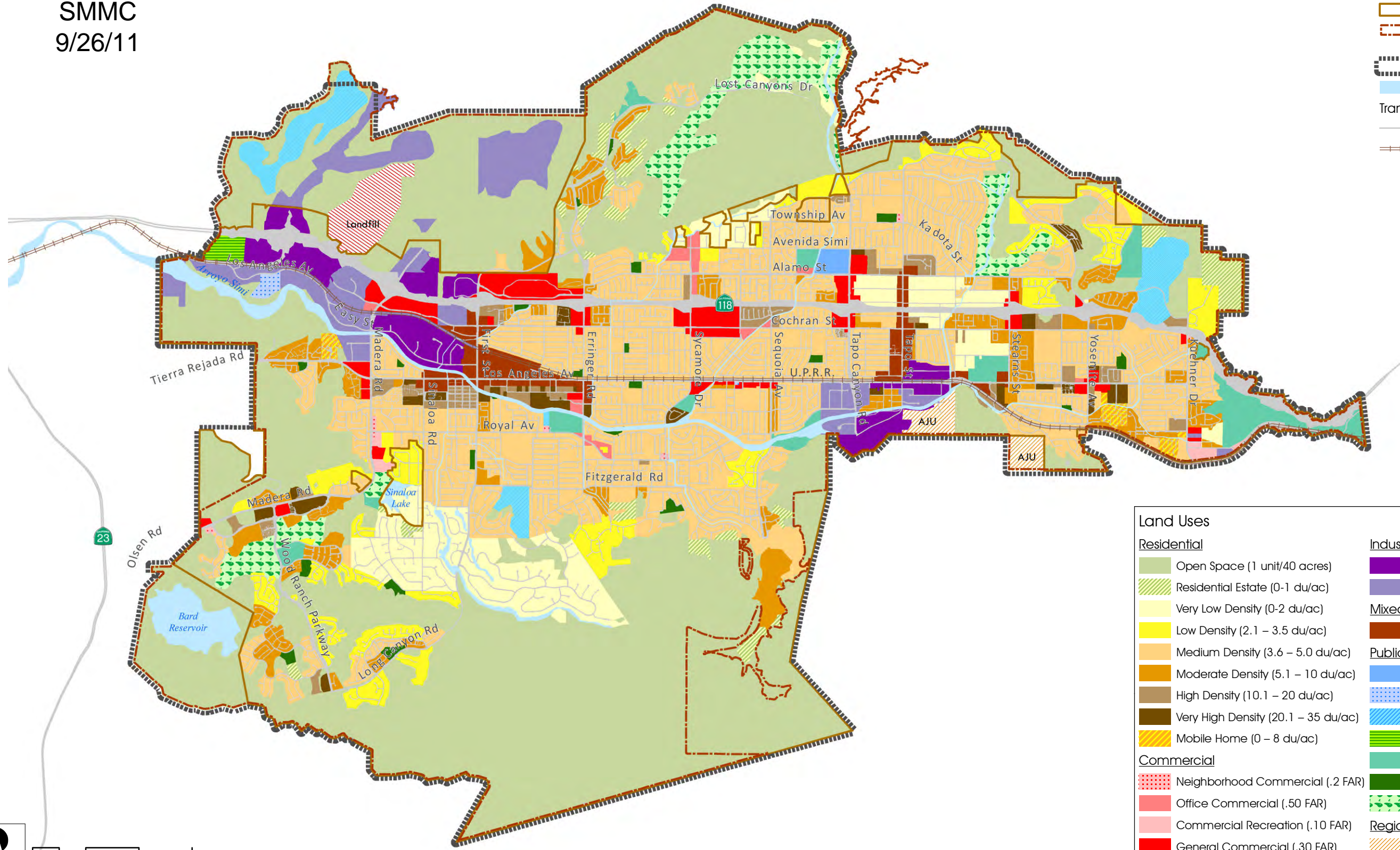


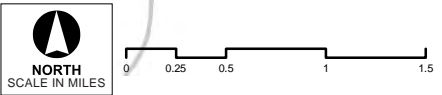
Agenda Item 10(a)
SMMC
9/26/11



- Legend**
- City Boundary
 - City Urban Restriction Boundary
 - Sphere of Influence
 - Water Body
 - Transportation System
 - Road/Freeway
 - Railroad

Land Uses		
Residential		
 Open Space (1 unit/40 acres)	 Business Park (.5 FAR)	
 Residential Estate (0-1 du/ac)	 Industrial (.32 FAR)	
 Very Low Density (0-2 du/ac)	Mixed- Use	
 Low Density (2.1 – 3.5 du/ac)	 Mixed-Use (Up to 1.5 FAR)	
 Medium Density (3.6 – 5.0 du/ac)	Public/Semi-Public	
 Moderate Density (5.1 – 10 du/ac)	 Civic Center	
 High Density (10.1 – 20 du/ac)	 Public Services Center	
 Very High Density (20.1 – 35 du/ac)	 Cemetery	
 Mobile Home (0 – 8 du/ac)	 Regional Park	
Commercial		 Community Park
 Neighborhood Commercial (.2 FAR)	 Neighborhood Park	
 Office Commercial (.50 FAR)	 Golf Course	
 Commercial Recreation (.10 FAR)	Regional Facility or Institution	
 General Commercial (.30 FAR)	 AJU (American Jewish University)	
	 Landfill	

DD21310001 Simi Valley General Plan Update EIR



Source: City of Simi Valley, 2010; Atkins, 2011; Date Revised: December 13, 2010; D21310_Simi_Valley_GPIProposed_GP.mxd

Figure 3-3
General Plan Land Use Map